

Montgomery Township School District



Public Hearing 2018-2019

Maintaining Excellence

**Annette M. Wells
Business Administrator**

April 24, 2018



Strategic Goals

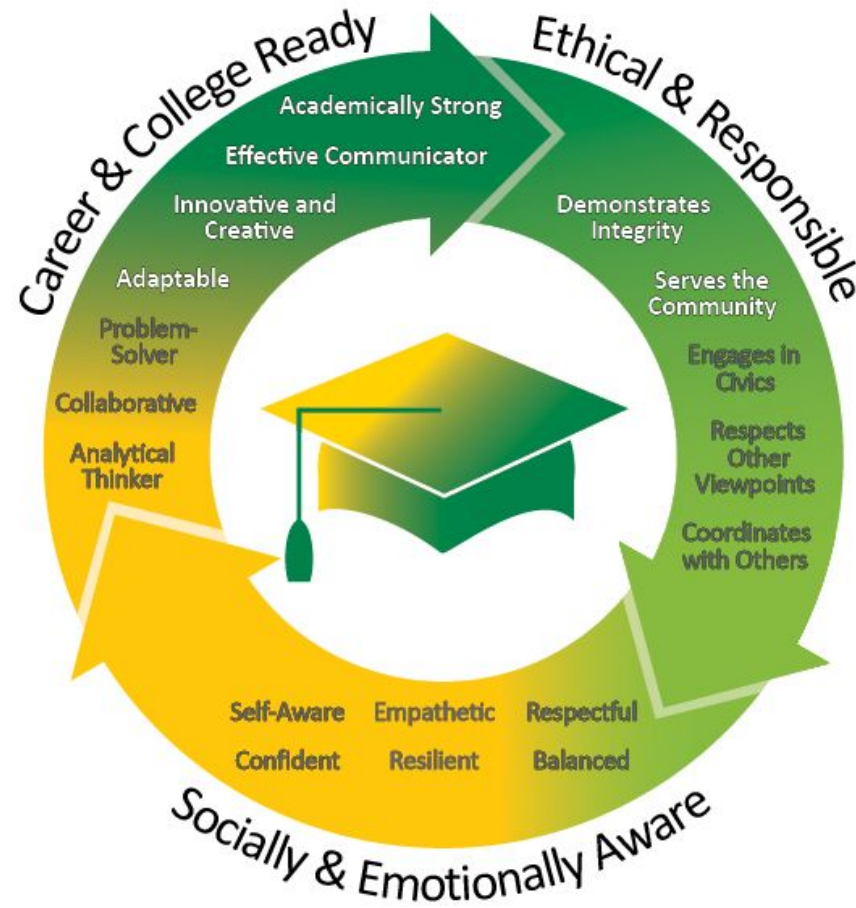
1. Maximize the social-emotional and academic growth of every student.
2. Ensure a learning environment that promotes excellence.
3. Strengthen stakeholder relationships to support and enhance student learning.
4. Optimize operational and financial resources to enhance student experience.

Montgomery Township School District



Montgomery Township School District

PORTRAIT OF A GRADUATE



Montgomery Township School District

Budget Process



- **September 2017** - OFF Committee established budget goals
- **September 2017** - District staff began the budgeting process
- **October 2017 through April 2018** - OFF held budget discussions
- **November 2017** - Public OFF Meeting
- **November 2017** - Google Form created for public input
- **February 2018** - Public Presentations (Operations and Instructional Services)
- **March 2018** - Public Presentations (Pupil Services, Personnel and Instructional Technology)

Montgomery Township School District

Budget Process

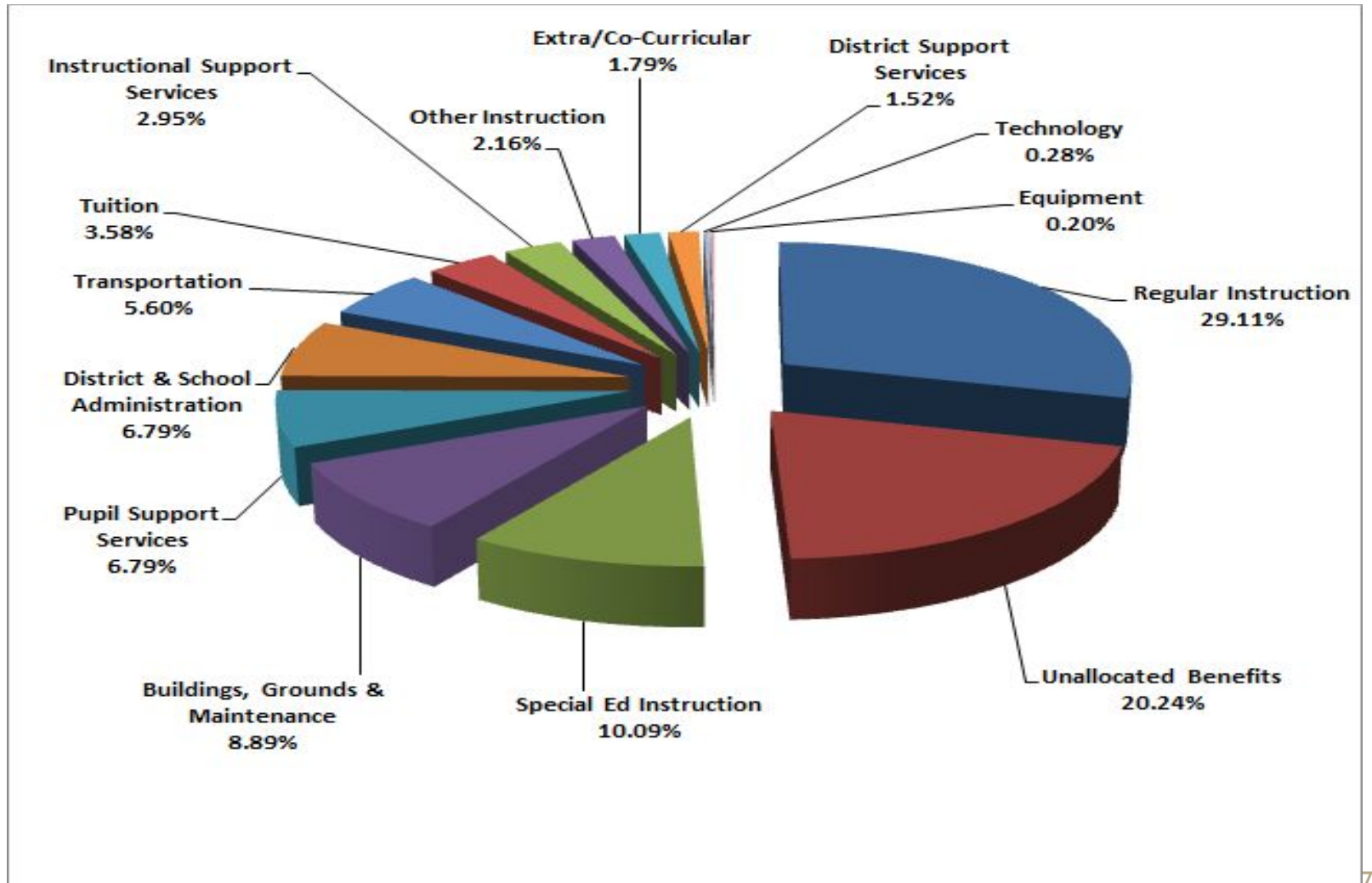


- **March 27, 2018** - The Board of Education adopted a tentative budget
- **March 2018** - The district submitted the budget to the Executive County Superintendent
- **April 2018** - The OFF Committee requested a reduction of \$150,000 in the General Fund budget
- **April 2018** - The district updated the budget and consulted with the County Office for approval
- **April 19, 2018** - The District advertised the budget
- **April 24, 2018** - Public Hearing and Board of Education adoption of 2018-19 school budget

Anticipated General Fund Expenditures

	2016-17 Actual	2017-18 Revised	2018-19 Budget	Percent change
Regular Instruction	23,359,491	24,179,187	24,788,369	2.52%
Unallocated Benefits	14,658,687	15,358,102	17,239,360	12.24%
Special Education Instr.	7,684,657	8,302,818	8,592,372	3.49%
Buildings, Grounds & Maint	6,569,832	7,870,069	7,573,725	-3.77%
Pupil Support Services	5,294,590	5,616,412	5,784,477	2.99%
District & School Admin	5,468,591	6,001,762	5,779,695	-3.70%
Transportation	4,259,696	4,618,055	4,772,718	3.35%
Out of District Tuition	2,689,931	2,347,702	3,045,414	29.72%
Instruct Support Services	2,232,611	2,444,649	2,512,336	2.77%
Other Instruction	1,474,080	1,719,288	1,838,207	6.92%
Extra-Curricular	1,442,927	1,556,736	1,523,673	-2.12%
District Support Services	1,162,126	1,493,634	1,293,384	-13.41%
Technology Support Serv	194,850	229,899	239,218	4.05%
Equipment	<u>263,187</u>	<u>581,510</u>	<u>172,855</u>	<u>-70.27%</u>
General Fund Total	76,755,256	82,319,823	85,155,803	3.45%

Montgomery Township School District General Fund Expenditures By Program



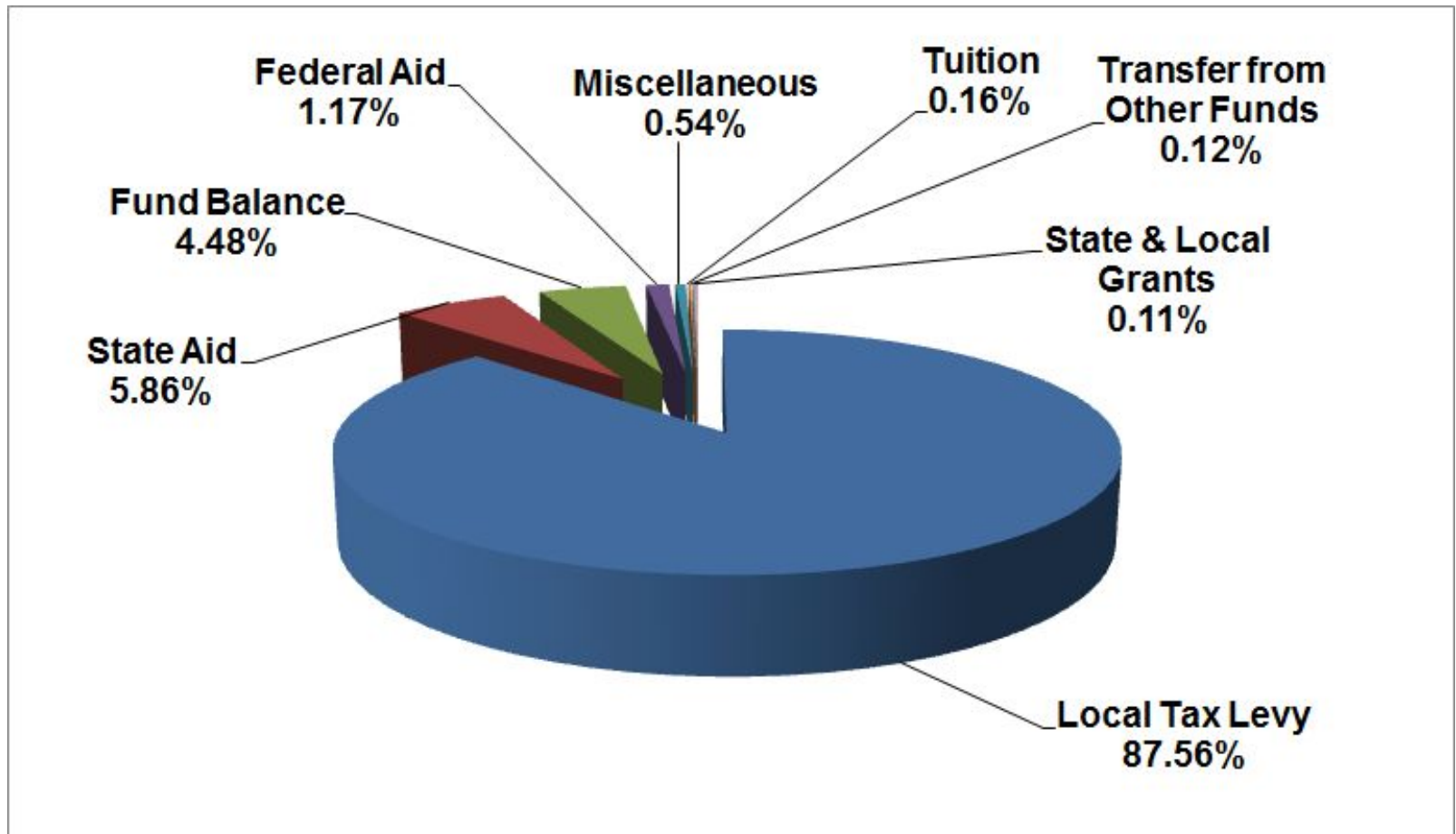
Anticipated General Fund Revenues

	2016-17 Actual	2017-18 Anticipated	2018-19 Budget	Percent Change
Local Taxes	71,928,453	73,367,022	75,780,287	3.49%
State Aid	4,085,768	4,263,768	4,488,956	5.28%
Extraordinary Aid	779,559	360,945	361,000	0.02%
Medicaid Reim.	26,800	25,619	25,619	0.00%
Tuition	203,336	195,000	147,760	-24.23%
Fees	534,604	475,000	350,000	-26.32%
Interest	120,957	90,000	50,000	-44.44%
Misc.	358,123	180,000	112,846	-37.31%
From Reserves	0	250,000	110,000	-56.00%
Fund Balance	<u>3,170,543</u>	<u>3,595,668</u>	<u>3,729,335</u>	<u>3.72%</u>
Total Revenues	81,208,143	82,803,022	85,155,803	2.84%

Montgomery Township School District



2018-2019 Budget General Fund Revenue



Montgomery Township School District

Tax Distribution 2018-19



<u>Municipality</u>		<u>Montgomery Twp</u>	<u>Rocky Hill</u>
Percent Share		0.975134954	0.024865046
General Fund Tax Levy	\$75,780,287	\$73,896,007	\$1,884,280
Debt Service Tax Levy			
Pre merger	\$ 5,437,318	\$ 5,437,318	\$ 0
Post merger	1,653,246	1,612,138	41,108
Total Debt Service	<u>\$ 7,090,564</u>	<u>\$ 7,049,456</u>	<u>\$ 41,108</u>
Total Tax Levy	\$82,870,851	\$80,945,463	\$1,925,388

Montgomery Township School District



Tax Impact

Montgomery Township

2017 Ratables	\$3,829,547,388
2018 Ratables	\$3,848,704,985
Increased Ratables	\$19,157,597
Average Assessment	\$508,118
Estimated Impact Based on Average Assessment	\$172

Montgomery Township School District



Tax Impact

Rocky Hill

2017 Ratables	\$128,632,724	
2018 Ratables	\$129,576,700	
Increased Ratables of	\$943,976	
Average Assessment	\$444,600	
Estimated Impact Based on Average Assessment		\$105

Montgomery Township School District Next Steps 2018-19



Analysis of:

- Educational Programs
- Extra-Curricular Programs
- Co-Curricular Programs
- Personnel

Montgomery Township School District Estimated Timelines for Review of Items with Budget Consideration



	April 23 OFF	May OFF	June OFF	July OFF
Extra-Curricular Programs	X			
Co-Curricular Programs	X			
3-5 Year Financial Plan	Draft	Refined		
Professional Liability Insurance			X	
Health Insurance		X		
Educational Programs		X	X	X
Personnel			X	X

Montgomery Township School District



Questions

